

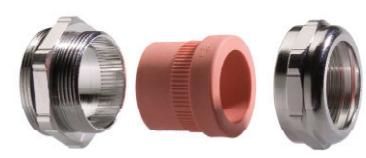
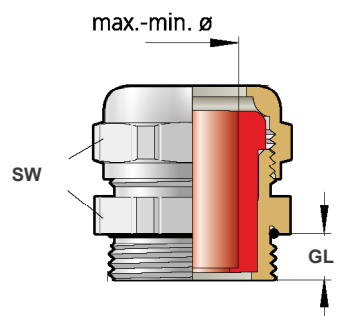


M-UNIEX

Ausführung construction	EX
Werkstoff material	Messing vernickelt nickel-plated brass
Dichtring sealing	TPE
Temperatur temperature	-20°C - +60°C
Schutzart protection	IP68
Besonderheit: specials:	Verschraubung mit Vollgummi-Dicht- einsatz. Cable gland with solid rubber clamping insert.



II 2G Ex e IIC Gb
II 2D Ex tb IIIC Db IP66/68
PTB 14 ATEX 1011X xx CE0102
II 2G/II 2D CE 0102
IECEX - IECEX PTB 14.0021X
EAC - RU C-DE.MW06.B.00002



Gewindeart metrisch

Art. Nr. art. no.	Gewinde thread	für Kabel for cable	SW mm	GL mm	VPE Stk. unit pcs.
M-UNIEXM1606	M16	5,0 - 6,5	20	6,0	50
M-UNIEXM1608	M16	6,0 - 8,5	20	6,0	50
M-UNIEXM1611	M16	9,0 - 11,5	20	6,0	50
M-UNIEXM2009	M20	7,5 - 9,0	22	6,5	50
M-UNIEXM2012	M20	9,5 - 12,0	22	6,5	50
M-UNIEXM2014	M20	11,0 - 14,0	22	6,5	25
M-UNIEXM2015	M20	12,5 - 15,5	24	6,5	25
M-UNIEXM2511	M25	9,0 - 11,0	30	7,5	50
M-UNIEXM2514	M25	11,5 - 14,0	30	7,5	50
M-UNIEXM2517	M25	14,5 - 17,0	30	7,5	50
M-UNIEXM2520	M25	17,5 - 20,5	30	7,5	50
M-UNIEXM3216	M32	14,0 - 16,5	36	8,0	25
M-UNIEXM3219	M32	17,0 - 19,5	36	8,0	25
M-UNIEXM3222	M32	20,0 - 22,5	36	8,0	25
M-UNIEXM3226	M32	23,0 - 26,0	36	8,0	25
M-UNIEXM4024	M40	21,5 - 24,0	45	8,0	10
M-UNIEXM4027	M40	24,5 - 27,0	45	8,0	10
M-UNIEXM4030	M40	27,5 - 30,0	45	8,0	10
M-UNIEXM4033	M40	30,5 - 33,5	45	8,0	10

Auf Anfrage
on request

- Silikon Einsatz
silicone insert ✓
- TPE-V Einsatz
TPE-V insert ✓
- Edelstahl Ausführung
stainless steel ✓
- EMV Ausführung
EMC type ✓
- Mehrfacheinsätze
multiple clamping inserts ✓
- ungebohrte Dichteinsätze
undrilled inserts ✓
- weitere Gewindelängen
more thread lengths ✓