

# Mainfix CS

EN 45545-2 ( HL2)

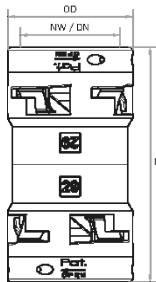
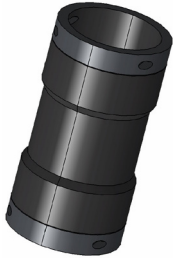


<b>Ausführung</b> construction	Verbinder connector
<b>Werkstoff</b> material	Polyamid 6, UL94 V0 polyamide 6, UL94 V0
<b>Temperatur</b> temperature	-40°C - +105°C
<b>Schutzart</b> protection	IP66 / IP68 / IP69K
<b>gemäß</b> according to	IEC EN 61386

Art. Nr. IP66 art. no. IP66	Art. Nr. IP68/69K art. no. IP68/69K	NW DN	L mm	OD mm	VPE Stk. unit pcs.
CS6*1717	CS8*1717	17-17	65,7	30,0	50
CS6*2323	CS8*2323	23-23	84,0	38,0	30
CS6*2929	CS8*2929	29-29	86,0	45,5	20
CS6*3636	CS8*3636	36-36	102,0	57,0	20
CS6*4848	CS8*4848	48-48	115,0	68,0	10

**Wellrohrverbinder** geeignet für den Einsatz im Maschinen-, Anlagen-, Fahrzeug- und Schiffsbau sowie in der Schienenverkehrstechnik bei gleichzeitiger Abdichtung über das Wellrohr von bis zu IP69K.

**Connector for corrugated conduits** suitable for use in mechanical engineering, vehicle construction, shipbuilding and railway technology also provide complementary liquid and tightness at the conduit itself until to IP69K.



Mainfix Kunststoff / Mainfix plastic

