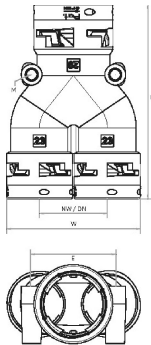
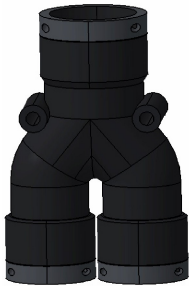


|                                   |   |
|-----------------------------------|---|
| <b>Ausführung</b><br>construction | Y - Verbinder<br>Y - connector              |
| <b>Werkstoff</b><br>material      | Polyamid 6, UL94 V0<br>polyamide 6, UL94 V0 |
| <b>Temperatur</b><br>temperature  | -40°C - +105°C                              |
| <b>Schutzart</b><br>protection    | IP66 / IP68 / IP69K                         |
| <b>gemäß</b><br>according to      | IEC EN 61386                                |

### Y-Verteiler / Y-connector

| Art. Nr. IP66<br>art. no. IP66 | Art. Nr. IP68/69K<br>art. no. IP68/69K | NW<br>DN | L<br>mm | W<br>mm | E<br>mm | VPE Stk.<br>unit pcs. |
|--------------------------------|--|----------|---------|---------|---------|-----------------------|
| Y6*100707                      | Y8*100707                              | 10-07-07 | 69,4    | 35,0    | 21,0    | 20                    |
| Y6*121010                      | Y8*121010                              | 12-10-10 | 74,0    | 41,0    | 26,0    | 20                    |
| Y6*171212                      | Y8*171212                              | 17-12-12 | 82,5    | 49,0    | 32,0    | 20                    |
| Y6*231717                      | Y8*231717                              | 23-17-17 | 96,0    | 61,0    | 40,0    | 20                    |
| Y6*292323                      | Y8*292323                              | 29-23-23 | 112,0   | 77,0    | 48,0    | 10                    |
| Y6*362929                      | Y8*362929                              | 36-29-29 | 130,0   | 92,0    | 58,0    | 5                     |
| Y6*483636                      | Y8*483636                              | 48-36-36 | 148,5   | 115,0   | 70,0    | 5                     |



**Wellrohrverteiler-Anschlussarmatur Typ Y** zur Aufteilung eingehender Leitungen. Durch die parallel verlaufenden Ausgänge in Richtung der Eingehenden Leitung, können Kabel und Litzen problemlos eingeführt und durch die Armatur gezogen werden. Geeignet für normale Anforderungen in technischen oder Elektroinstallations-Anwendungen, insbesondere für erhöhte Anforderungen in Industrie und Bahntechnik bei gleichzeitiger Abdichtung über das Wellrohr von bis zu IP69K.

**Distribution fitting type Y** is conceived to divide conductor bundles into multiple conduit lines. Available with one large conduit entry and two smaller conduit exits. Due to the parallel outlets in line with the inlet direction, wires and cables can be easily pulled through the fitting. Suitable to standard requirements in industrial and electro technical installation applications as well as for increased requirements in heavy industry and railway applications also provide complementary liquid and tightness at the conduit itself until to IP69K..

