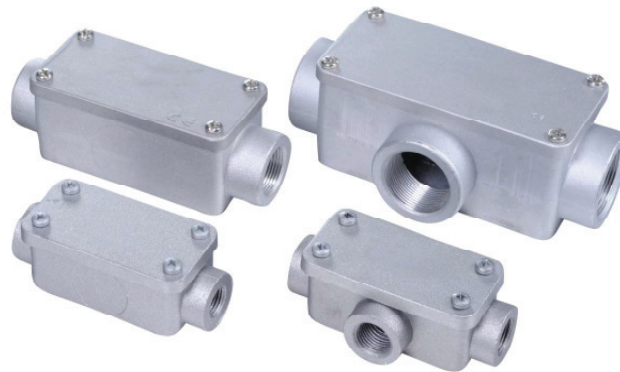


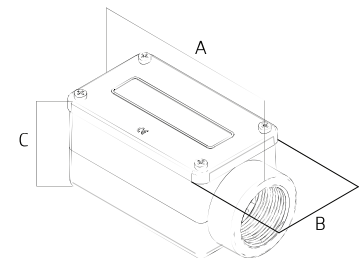
## C1-C2A-C3



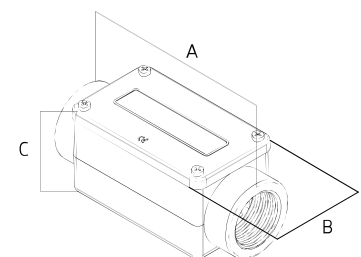
<b>Ausführung</b> construction	Abzweigkasten junction box
<b>Werkstoff</b> material	Aluguss aluminium die cast
<b>Dichtung</b> sealing	TPE
<b>Temperatur</b> temperature	-40°C - +100°C°
<b>Schutzart</b> protection	IP65
<b>Gemäß</b> according to	IEC EN 61386



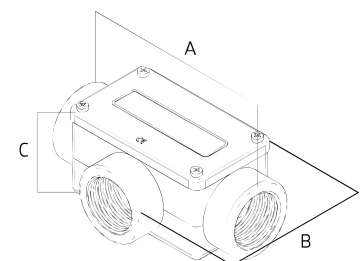
Art. Nr. M art. no. M	metrisch metric	Art. Nr. PG art. no. PG	PG PG	Art. Nr. Zoll art. no. GAS	Zoll GAS	A mm	B mm	C mm	VPE Stk. unit pcs.
		<b>C11009</b>	PG09	<b>C101001</b>	1/4"	82	35	34	10
<b>C1100M16</b>	M16	<b>C110011</b>	PG11	<b>C101002</b>	3/8"	82	35	34	10
<b>C1110M20</b>	M20	<b>C111013</b>	PG13,5	<b>C101101</b>	1/2"	115	45	44	10
		<b>C111016</b>	PG16			115	45	44	10
<b>C1110M25</b>	M25	<b>C111021</b>	PG21	<b>C101102</b>	3/4"	115	45	44	10
<b>C1120M32</b>	M32	<b>C112029</b>	PG29	<b>C10120</b>	1"	128	55	54	5
<b>C1130M40</b>	M40			<b>C101301</b>	1 1/4"	146	70	70	5
<b>C1130M50</b>	M50	<b>C113036</b>	PG36	<b>C101302</b>	1 1/2"	146	70	70	5
		<b>C114048</b>	PG48	<b>C101402</b>	2"	160	80	80	2

C1 - 1 Ausgang  
C1 - 1 exit

Art. Nr. M art. no. M	metrisch metric	Art. Nr. PG art. no. PG	PG PG	Art. Nr. Zoll art. no. GAS	Zoll GAS	A mm	B mm	C mm	VPE Stk. unit pcs.
		<b>C2A20009</b>	PG09	<b>C2A02001</b>	1/4"	94	35	34	10
<b>C2A200M16</b>	M16	<b>C2A20011</b>	PG11	<b>C2A02002</b>	3/8"	94	35	34	10
<b>C2A210M20</b>	M20	<b>C2A21013</b>	PG13,5	<b>C2A02101</b>	1/2"	130	45	44	10
		<b>C2A21016</b>	PG16			130	45	44	10
<b>C2A210M25</b>	M25	<b>C2A21021</b>	PG21	<b>C2A02102</b>	3/4"	130	45	44	10
<b>C2A220M32</b>	M32	<b>C2A22029</b>	PG29	<b>C2A0220</b>	1"	150	55	54	5
<b>C2A230M40</b>	M40			<b>C2A02301</b>	1 1/4"	170	70	70	5
<b>C2A230M50</b>	M50	<b>C2A23036</b>	PG36	<b>C2A02302</b>	1 1/2"	170	70	70	5
		<b>C2A24048</b>	PG48	<b>C2A02402</b>	2"	190	80	80	2
				<b>C2A0250</b>	2 1/2"	310	110	102	1
				<b>C2A0260</b>	3"	310	110	118	1

C2A - 2 Ausgänge / gerade  
C2A - 1 exits / straight

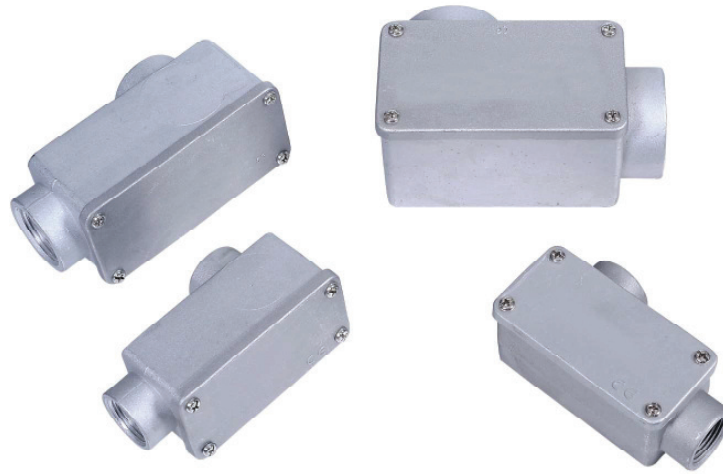
Art. Nr. M art. no. M	metrisch metric	Art. Nr. PG art. no. PG	PG PG	Art. Nr. Zoll art. no. GAS	Zoll GAS	A mm	B mm	C mm	VPE Stk. unit pcs.
		<b>C350009</b>	PG09	<b>C305001</b>	1/4"	94	46	34	10
<b>C3500M16</b>	M16	<b>C350011</b>	PG11	<b>C305002</b>	3/8"	94	46	34	10
<b>C3510M20</b>	M20	<b>C351013</b>	PG13,5	<b>C305101</b>	1/2"	130	59	44	10
		<b>C351016</b>	PG16			130	59	44	10
<b>C3510M25</b>	M25	<b>C351021</b>	PG21	<b>C305102</b>	3/4"	130	59	44	10
<b>C3520M32</b>	M32	<b>C352029</b>	PG29	<b>C30520</b>	1"	150	76	54	5
<b>C3530M40</b>	M40			<b>C305301</b>	1 1/4"	170	95	70	5
<b>C3530M50</b>	M50	<b>C353036</b>	PG36	<b>C305302</b>	1 1/2"	170	95	70	5
		<b>C354048</b>	PG48	<b>C305402</b>	2"	190	110	80	2
				<b>C30550</b>	2 1/2"	310	144	102	1
				<b>C30560</b>	3"	310	144	118	1

C3 - 3 Ausgänge  
C3 - 3 exits

# C2-C2D

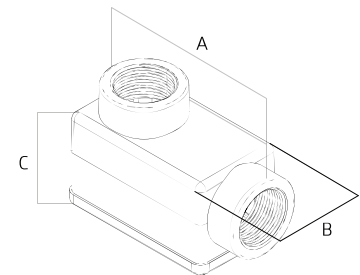


<b>Ausführung</b> construction	Abzweigkasten junction box
<b>Werkstoff</b> material	Aluguss aluminium die cast
<b>Dichtung</b> sealing	TPE
<b>Temperatur</b> temperature	-40°C - +100°C
<b>Schutzart</b> protection	IP65
<b>Gemäß</b> according to	IEC EN 61386



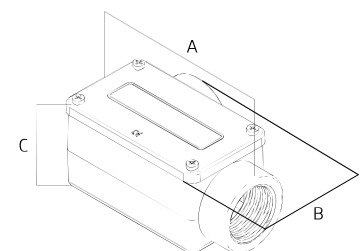
Art. Nr. M art. no. M	metrisch metric	Art. Nr. PG art. no. PG	PG PG	Art. Nr. Zoll art. no. GAS	Zoll GAS	A mm	B mm	C mm	VPE Stk. unit pcs.
		<b>C24009</b>	PG09	<b>C204001</b>	1/4"	82	35	46	10
<b>C2400M16</b>	M16	<b>C240011</b>	PG11	<b>C204002</b>	3/8"	82	35	46	10
<b>C2410M20</b>	M20	<b>C241013</b>		<b>C204101</b>	1/2"	115	45	59	10
		<b>C241016</b>	PG16			115	45	59	10
<b>C2410M25</b>	M25	<b>C241021</b>	PG21	<b>C204102</b>	3/4"	115	45	59	10
<b>C2420M32</b>	M32	<b>C242029</b>	PG29	<b>C20420</b>	1"	128	55	76	5
<b>C2430M40</b>	M40			<b>C204301</b>	1 1/4"	146	70	95	5
<b>C2430M50</b>	M50	<b>C243036</b>	PG36	<b>C204302</b>	1 1/2"	146	70	95	5
		<b>C244048</b>	PG48	<b>C204402</b>	2"	160	80	110	2
				<b>C20450</b>	2 1/2"	276	110	136	1
				<b>C20460</b>	3"	276	110	152	1

**C2 - 2 Ausgänge / 90°**  
C2 - 2 exits / 90°



Art. Nr. M art. no. M	metrisch metric	Art. Nr. PG art. no. PG	PG PG	Art. Nr. Zoll art. no. GAS	Zoll GAS	A mm	B mm	C mm	VPE Stk. unit pcs.
		<b>C2D9009</b>	PG09	<b>C2D09001</b>	1/4"	82	46	34	10
<b>C2D900M16</b>	M16	<b>C2D90011</b>	PG11	<b>C2D09002</b>	3/8"	82	46	34	10
<b>C2D910M20</b>	M20	<b>C2D91013</b>		<b>C2D09101</b>	1/2"	115	59	44	10
		<b>C2D91016</b>	PG16			115	59	44	10
<b>C2D910M25</b>	M25	<b>C2D91021</b>	PG21	<b>C2D09102</b>	3/4"	115	59	44	10
<b>C2D920M32</b>	M32	<b>C2D92029</b>	PG29	<b>C2D0920</b>	1"	128	76	54	5
<b>C2D930M40</b>	M40			<b>C2D09301</b>	1 1/4"	146	95	70	5
<b>C2D930M50</b>	M50	<b>C2D93036</b>	PG36	<b>C2D09302</b>	1 1/2"	146	95	70	5
		<b>C2D94048</b>	PG48	<b>C2D09402</b>	2"	160	110	80	2
				<b>C2D09050</b>	2 1/2"	276	144	102	1
				<b>C2D09060</b>	3"	276	144	118	1

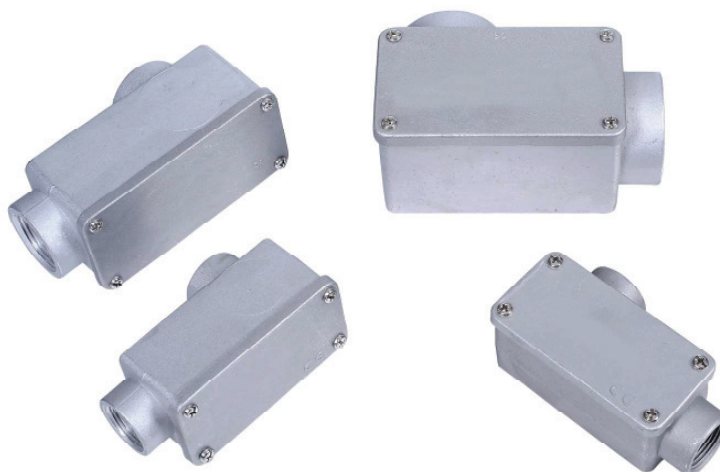
**C2D - 2 Ausgänge / nach rechts**  
C2 - 2 exits / to the right



## C2S-C4

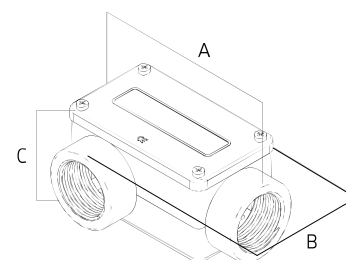


<b>Ausführung</b> construction	Abzweigkasten junction box
<b>Werkstoff</b> material	Aluguss aluminium die cast
<b>Dichtung</b> sealing	TPE
<b>Temperatur</b> temperature	-40°C - +100°C°
<b>Schutzart</b> protection	IP65
<b>Gemäß</b> according to	IEC EN 61386



Art. Nr. M art. no. M	metrisch metric	Art. Nr. PG art. no. PG	PG PG	Art. Nr. Zoll art. no. GAS	Zoll GAS	A mm	B mm	C mm	VPE Stk. unit pcs.
		<b>C2S10009</b>	PG09	<b>C2S010001</b>	1/4"	82	46	34	10
<b>C2S1000M16</b>	M16	<b>C2S100011</b>	PG11	<b>C2S010002</b>	3/8"	82	46	34	10
<b>C2S1010M20</b>	M20	<b>C2S101013</b>	PG13,5	<b>C2S010101</b>	1/2"	115	59	44	10
		<b>C2S101016</b>	PG16			115	59	44	10
<b>C2S1010M25</b>	M25	<b>C2S101021</b>	PG21	<b>C2S010102</b>	3/4"	115	59	44	10
<b>C2S1020M32</b>	M32	<b>C2S102029</b>	PG29	<b>C2S01020</b>	1"	128	76	54	5
<b>C2S1030M40</b>	M40			<b>C2S010301</b>	1 1/4"	146	95	70	5
<b>C2S1030M50</b>	M50	<b>C2S103036</b>	PG36	<b>C2S010302</b>	1 1/2"	146	95	70	5
		<b>C2S104048</b>	PG48	<b>C2S010402</b>	2"	160	110	80	2
				<b>C2S01050</b>	2 1/2"	276	144	102	1
				<b>C2S01060</b>	3"	276	144	118	1

**C2S - 2 Ausgänge / nach links**  
C2S - 2 exits / to the left



Art. Nr. M art. no. M	metrisch metric	Art. Nr. PG art. no. PG	PG PG	Art. Nr. Zoll art. no. GAS	Zoll GAS	A mm	B mm	C mm	VPE Stk. unit pcs.
		<b>C46009</b>	PG09	<b>C406001</b>	1/4"	94	57	34	10
<b>C4600M16</b>	M16	<b>C460011</b>	PG11	<b>C406002</b>	3/8"	94	57	34	10
<b>C4610M20</b>	M20	<b>C461013</b>	PG13,5	<b>C406101</b>	1/2"	130	74	44	10
		<b>C461016</b>	PG16			130	74	44	10
<b>C4610M25</b>	M25	<b>C461021</b>	PG21	<b>C406102</b>	3/4"	130	74	44	10
<b>C4620M32</b>	M32	<b>C462029</b>	PG29	<b>C40620</b>	1"	150	97	54	5
<b>C4630M40</b>	M40			<b>C406301</b>	1 1/4"	170	120	70	5
<b>C4630M50</b>	M50	<b>C463036</b>	PG36	<b>C406302</b>	1 1/2"	170	120	70	5
		<b>C464048</b>	PG48	<b>C406402</b>	2"	190	140	80	2
				<b>C40650</b>	2 1/2"	310	178	102	1
				<b>C40660</b>	3"	310	178	118	1

**C4 - 4 Ausgänge**  
C4 - 4 exits

