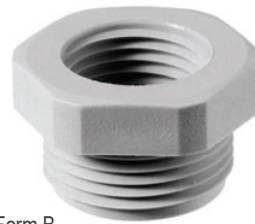


K-RED / K-ERW



Ausführung construction	Reduzierung Erweiterung reducer enlarger
Werkstoff material	Polyamid 6 polyamide 6
Temperatur temperature	-30°C - +120°C
Schutzart protection	-
Gemäß according to	-



Form B
shape B



Form A
shape A

grau RAL 7035
grey RAL 7035

Art. Nr. art. no.	AG male	IG female	L mm	GL/AG mm	SW mm	Form form	VPE Stk. unit pcs.
K-REDM1612	M16	M12	12,0	8,0	24	B	100
K-REDM2012	M20	M12	12,0	8,0	24	B	100
K-REDM2016	M20	M16	12,0	8,0	24	B	100
K-REDM2512	M25	M12	14,0	8,0	29	B	100
K-REDM2516	M25	M16	14,0	8,0	29	B	100
K-REDM2520	M25	M20	14,0	8,0	29	B	100
K-REDM3212	M32	M12	16,0	10,0	36	B	50
K-REDM3216	M32	M16	16,0	10,0	36	B	50
K-REDM3220	M32	M20	16,0	10,0	36	B	50
K-REDM3225	M32	M25	16,0	10,0	36	B	50
K-REDM4016	M40	M16	16,0	10,0	46	B	50
K-REDM4020	M40	M20	16,0	10,0	46	B	50
K-REDM4025	M40	M25	16,0	10,0	46	B	50
K-REDM4032	M40	M32	16,0	10,0	55	B	50
K-REDM5020	M50	M20	18,0	12,0	55	B	25
K-REDM5025	M50	M25	18,0	12,0	55	B	25
K-REDM5032	M50	M32	18,0	12,0	55	B	25
K-REDM5040	M50	M40	18,0	12,0	55	B	25
K-REDM6325	M63	M25	18,0	12,0	68	B	25
K-REDM6332	M63	M32	18,0	12,0	68	B	25
K-REDM6340	M63	M40	18,0	12,0	68	B	25
K-REDM6350	M63	M50	18,0	12,0	68	B	25

Aussengewinde (AG) Metrisch
Innengewinde (IG) Metrisch

male thread (AG) metric
female thread (IG) metric

Art. Nr. art. no.	AG male	IG female	L mm	GL/AG mm	SW mm	VPE Stk. unit pcs.
K-ERWM1216	M12	M16	20,5	8,0	20	100
K-ERWM1620	M16	M20	20,5	8,0	24	100
K-ERWM2025	M20	M25	21,0	8,0	30	100
K-ERWM2532	M25	M32	23,0	8,0	37	50
K-ERWM3240	M32	M40	25,0	10,0	45	50

Aussengewinde (AG) Metrisch
Innengewinde (IG) Metrisch

male thread (AG) metric
female thread (IG) metric

Art. Nr. art. no.	AG male	IG female	L mm	GL/AG mm	SW mm	Form form	VPE Stk. unit pcs.
K-REDPG0907	PG09	PG07	20,5	8,0	19	A	100
K-REDPG1107	PG11	PG07	14,0	8,0	22	B	100
K-REDPG1109	PG11	PG09	22,5	8,0	22	A	100
K-REDPG1307	PG13,5	PG07	15,0	9,0	24	B	100
K-REDPG1309	PG13,5	PG09	15,0	9,0	24	B	100
K-REDPG1311	PG13,5	PG11	24,0	9,0	24	A	100
K-REDPG1609	PG16	PG09	16,0	10,0	27	B	100
K-REDPG1611	PG16	PG11	16,0	10,0	27	B	100
K-REDPG1613	PG16	PG13,5	27,0	10,0	27	A	100
K-REDPG2111	PG21	PG11	16,0	11,0	32	B	100
K-REDPG2113	PG21	PG13,5	16,0	11,0	32	B	100
K-REDPG2116	PG21	PG16	16,0	11,0	32	B	100
K-REDPG2913	PG29	PG13,5	17,0	11,0	40	B	50
K-REDPG2916	PG29	PG16	17,0	11,0	40	B	50
K-REDPG2921	PG29	PG21	17,0	11,0	40	B	50
K-REDPG3616	PG36	PG16	19,0	13,0	50	B	50
K-REDPG3621	PG36	PG21	19,0	13,0	50	B	50
K-REDPG3629	PG36	PG29	24,0	18,0	50	B	50
K-REDPG4221	PG42	PG21	24,0	18,0	55	B	25
K-REDPG4229	PG42	PG29	24,0	18,0	55	B	25
K-REDPG4236	PG42	PG36	24,0	18,0	55	B	25
K-REDPG4829	PG48	PG29	24,0	18,0	60	B	25
K-REDPG4836	PG48	PG36	20,0	14,0	60	B	25
K-REDPG4842	PG48	PG42	23,0	17,0	60	B	25

Aussengewinde (AG) PG
Innengewinde (IG) PG

male thread (AG) PG
female thread (IG) PG

Art. Nr. art. no.	AG male	IG female	L mm	GL/AG mm	SW mm	VPE Stk. unit pcs.
K-ERWPG0709	PG07	PG09	21,0	8,0	19	100
K-ERWPG0911	PG09	PG11	23,0	8,0	22	100
K-ERWPG1113	PG11	PG13,5	23,0	8,0	24	100
K-ERWPG1116	PG11	PG16	24,5	8,0	27	100
K-ERWPG1316	PG13,5	PG16	26,0	9,0	27	100
K-ERWPG1621	PG16	PG21	29,0	9,0	32	100
K-ERWPG2129	PG21	PG29	32,0	10,0	42	50
K-ERWPG2936	PG29	PG36	35,5	11,0	53	25
K-ERWPG3642	PG36	PG42	40,5	13,0	60	10
K-ERWPG4248	PG42	PG48	41,0	13,0	65	10

Aussengewinde (AG) PG
Innengewinde (IG) PG

male thread (AG) PG
female thread (IG) PG