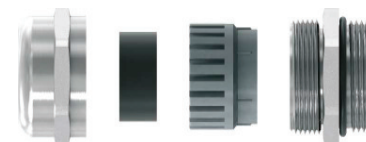
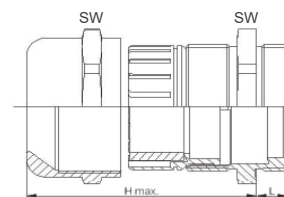


M-LF



Ausführung construction	Standard standard
Werkstoff material	Messing vernickelt/PA6 nickel-plated brass/PA6
Dichtring sealing	Chloropren CR chloroprene CR
Temperatur temperature	-40°C - +100°C kurz / short +150°C
Schutzart protection	IP68
Besonderheit: specials:	Dichtung über Klemmkäfig sealing by clamping cage



Gewindeart metrisch

Art. Nr. art. no.	Gewinde thread	für Kabel for cable	SW mm	L mm	H mm	VPE Stk. unit pcs.
M-LFM1205	M12	2,0 - 5,0	14	5,0	25,0	100
M-LFM1206	M12	3,0 - 6,5	14	5,0	25,0	100
M-LFM1606	M16	2,0 - 6,0	17	7,0	33,0	50
M-LFM1608	M16	3,0 - 8,0	17	5,5	28,0	100
M-LFM1610	M16	4,5 - 10,0	17	6,0	28,0	100
M-LFM2009	M20	5,0 - 9,0	22	6,0	30,0	50
M-LFM2012	M20	6,0 - 12,0	22	6,0	30,0	50
M-LFM2013	M20	8,0 - 13,0	22	6,0	30,0	50
M-LFM2512	M25	7,0 - 12,0	24	8,0	42,0	25
M-LFM2514	M25	8,0 - 14,0	30	7,0	35,0	25
M-LFM2517	M25	11,0 - 18,0	30	7,0	35,0	25
M-LFM3216	M32	9,0 - 16,0	30	9,0	48,0	25
M-LFM3218	M32	13,0 - 19,0	34	8,0	35,0	10
M-LFM3221	M32	15,0 - 21,0	34	8,0	38,0	10
M-LFM4020	M40	12,0 - 20,0	44	8,0	43,0	10
M-LFM4023	M40	16,0 - 23,0	44	8,0	43,0	10
M-LFM4025	M40	18,0 - 25,0	40	9,0	53,0	20
M-LFM4028	M40	19,0 - 28,0	44	8,0	52,0	10
M-LFM5026	M50	20,0 - 26,0	54	9,0	52,0	5
M-LFM5029	M50	21,0 - 29,0	54	9,0	52,0	5
M-LFM5032	M50	22,0 - 32,0	50	9,0	57,0	15
M-LFM5035	M50	25,0 - 35,0	54	9,0	52,0	5
M-LFM5038	M50	27,0 - 38,0	58	9,0	61,0	12
M-LFM6338	M63	27,0 - 38,0	66	10,0	54,0	5
M-LFM6342	M63	32,0 - 42,0	64	14,0	65,0	12
M-LFM6344	M63	34,0 - 44,0	64	14,0	65,0	12
M-LFM6348	M63	39,0 - 48,0	66	10,0	54,0	5

Gewindeart PG

Art. Nr. art. no.	Gewinde thread	für Kabel for cable	SW mm	L mm	H mm	VPE Stk. unit pcs.
M-LFP0705	PG07	2,0 - 5,0	14	6,0	28,0	50
M-LFP0706	PG07	3,0 - 6,5	14	6,0	28,0	50
M-LFP0906	PG09	2,0 - 6,0	17	6,0	28,0	50
M-LFP0908	PG09	4,0 - 8,0	17	6,0	28,0	50
M-LFP1107	PG11	3,0 - 7,0	20	6,0	31,0	50
M-LFP1110	PG11	5,0 - 10,0	20	6,0	31,0	50
M-LFP1309	PG13,5	5,0 - 9,0	22	6,5	31,0	50
M-LFP1312	PG13,5	6,0 - 12,0	22	6,5	31,0	50
M-LFP1612	PG16	7,0 - 12,0	24	6,5	34,0	25
M-LFP1614	PG16	10,0 - 14,0	24	6,5	34,0	25
M-LFP2116	PG21	9,0 - 16,0	30	7,0	39,0	25
M-LFP2118	PG21	13,0 - 18,0	30	7,0	39,0	25
M-LFP2920	PG29	12,0 - 20,0	40	8,0	47,0	20
M-LFP2925	PG29	18,0 - 25,0	40	8,0	47,0	20
M-LFP3626	PG36	20,0 - 26,0	50	10,0	57,0	15
M-LFP3632	PG36	22,0 - 32,0	50	10,0	57,0	15
M-LFP4231	PG42	25,0 - 31,0	58	12,0	60,0	12
M-LFP4238	PG42	30,0 - 38,0	58	12,0	60,0	12
M-LFP4835	PG48	29,0 - 35,0	64	14,0	63,0	12
M-LFP4844	PG48	34,0 - 44,0	64	14,0	63,0	12

Auf Anfrage
on requestweitere Gewindearten (Zoll, NPT)
more thread types (GAS, NPT) ✓weitere Gewindelängen
more thread lengths ✓Mehrfacheinsätze
multiple clamping inserts ✓